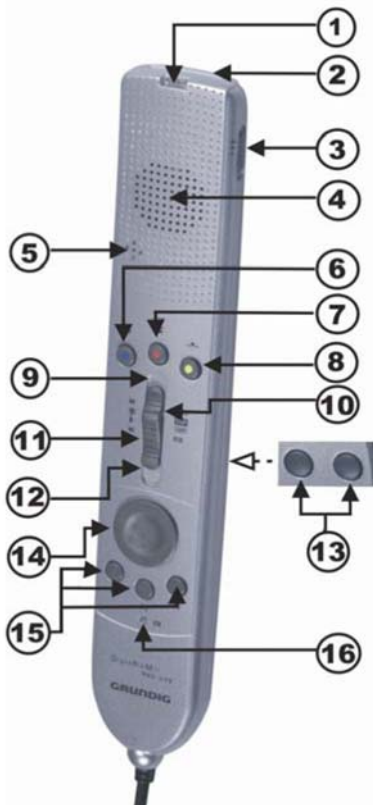


DigtaProMic**CONTROLS**

CONTROLS

- (1) Recording display
- (2) Barcode-reader connection (not with DigtaProMic Classic)
- (3) Recording sensitivity (dictation, dictation/conference, conference). For close-up speech (5-10 cm distance from mouth), switch to lowest (least sensitive) position
- (4) Loudspeaker
- (5) Microphone
- (6) "INDEX" button
- (7) "DICT" button (recording)
- (8) "INSERT" button
- (9) "FFWD" sliding-switch position (fastforward)
- (10) "STOP" sliding-switch position
- (11) "START" sliding-switch position
- (12) "REW" sliding-switch position (fast rewind)
- (13) Mouse buttons
(not with DigtaProMic Classic)
- (14) Mouse operation
(not with DigtaProMic Classic)
- (15) "F1", "F2" and "F3" function keys
- (16) USB connection display (power)

GENERAL

Instruction manual (PDF file)

The supplied system CD includes a complete instruction manual in the form of a PDF file; it is located in the "DOCU" directory and is available in several languages.

Use the Acrobat Reader* to view the instruction manual and print it if you wish.

** You can download the Acrobat Reader free of charge from www.adobe.com/products/acrobat/readstep.html*

Notes

Read the instruction manual carefully. Improper use may lead to loss of dictations or sections of dictations.

Make certain that the devices and accessories are protected from moisture (rain, splashes) and place them away from direct contact with heat or bright sunlight. The manufacturer is not liable for damage resulting from improper operation. For cleaning, use a dry or slightly dampened cloth. Do not use chemical cleaning agents.



This product complies with the following EC directives: >>89/336/CEE, 72/23/CEE, 93/68/CEE<<

Errors and modifications excepted.

ADAPTERSERVER OVERVIEW

The AdapterServer is an application that runs in the background. It manages devices connected to the PC as well as their events (control signals).

You can start the AdapterServer independently of a main application in order to link events with actions (example: pressing a button on the dictation microphone starts the dictation software).

If a main application (such as a DigtaSoft program) is started, it connects to the AdapterServer. The main application now evaluates the events until it is closed, since it controls the AdapterServer.

If an AdapterServer is not yet running, the main application starts it in the background. Only one AdapterServer can ever be active on one PC.

The AdapterServer provides the following features:

- Central configuration of all important hardware parameters
- Flexible integration of all supported devices into the software environment (word processor, database, etc.)
- Exchangeability of connected devices (example: USB microphone, COM adapter box microphone)
- Hardware conflicts are prevented
- Control signals of connected devices can be evaluated without a corresponding application having to be started on the PC.

The AdapterServer settings are stored in the Windows Registry.

ADAPTERSERVER INSTALLATION

Beginning the installation

- Insert the program CD in the CD drive. The "README.TXT" file provides the most recent information on the software.
- The setup window is opened.
- Follow the software instructions (language selection, welcome, confirmation of license agreement...).

Selecting the language

- Select the language for running the setup and the AdapterServer.

Copying procedure starts

- Before starting to copy, the settings you made are displayed once more.

If you want to make changes, click "back" several times until you arrive at the desired setting and make your changes.

- If the settings are OK, click "next" and copying is started.

Connecting the DigtaProMic 840 USB to the PC

- Once the installation is complete, the setup program will prompt you to connect the USB device to the PC. If the device is already connected to the PC, disconnect it and then re-connect it.
- Press the OK button.
- The required USB driver will now be installed. A warning may appear: "Drivers are not certified". Acknowledge the message by selecting "Continue Installation".

This installation is now complete.

ADAPTERSERVER INSTALLATION

Changing, repairing or moving an installation

If you restart setup from the CD, you are given the following selection options, provided the DigtaSoft product is already installed on your PC.


- **"Change program"**
Setup restarts with Select components. You can remove or add program components.
- **"Repair"**
The repair procedure is started.
- **"Remove"**
The program is removed from your PC.

STANDARD CONFIGURATION

The DigtaProMic 840 USB has the following functions enabled by default:

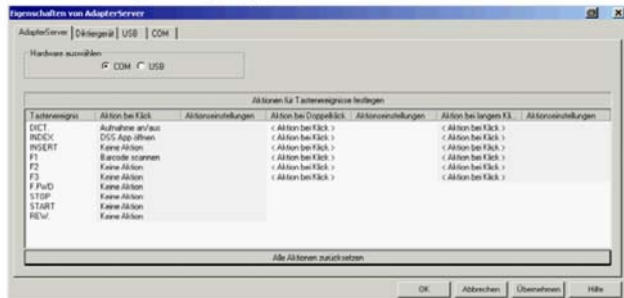
- **Microphone stand-by (record on/off)**
To switch the microphone to stand-by mode, press the red button "DICT" (7).
When the recording display (1) starts flashing, the microphone is ready for operation.
- **Activating the microphone**
To activate the microphone, move the slide switch to the "Start" position (11).
Once the microphone is activated, the recording display (11) will be continuously red lit.

ADAPTERSERVER CONFIGURATION

The AdapterServer runs as a separate program in the background. The  icon is visible on the Windows Quick Launch bar.

You open the settings dialog by right-clicking the  icon on the Windows Quick Launch bar and then selecting "Configuration".

The following dialog appears:



Configuration Overview

The user can create links between events and actions in the AdapterServer configuration. For example, the pressing of a particular button (event) on the dictation microphone can be connected to the starting of an application (action).

Events are:

- The pressing of certain buttons on the connected devices
- The connecting of a dictation machine or card reader to USB

ADAPTERSERVER CONFIGURATION

Actions are:

- The starting of the DSS application (program associated with the ".dss" extension in the Windows system)
- The scanning of a barcode
- The starting of a program
- Certain combinations (program with barcode) of the actions listed above are also possible
- The activation of microphone recording
- The execution of a hotkey (key combination)

Selecting the hardware

To operate the DigtaProMic 840 USB, select "USB" in the AdapterServer Configuration.

Defining Actions for Button Events

You can assign an action to every button event in the "Define actions for button events" list. See the "Actions" chapter for information on which actions are available.

You can enter the desired action directly into the list by clicking in the corresponding table field. The "Click", "Double-Click" and "Long Click" columns then contain a selection of the action.

Notes:

If you see three dots in the table "...", the double-click or long click of the button is linked with the same action as the normal click.

Please note that the corresponding hardware must be connected or selected for the selected assignments to be executed.