

turn voice into  action

GRUNDIG
Business Systems

Digta 7 Series

DssMover Portable



Release: April 2012

Overview

1	DIGITAL DICTATION WITHOUT PC INSTALLATION	3
2	DESCRIPTION - DSSMOVER PORTABLE.....	3
2.1	AVAILABILITY	3
2.2	START OF APPLICATION	4
2.3	APPLICATION	4
2.4	DEVICE CONFIGURATION (WIZARD)	5
2.5	DISTRIBUTION METHODS	6
2.5.1	<i>Move dictations to a folder</i>	6
2.5.2	<i>Send dictations by e-mail</i>	6
2.5.3	<i>Use of both options from case to case</i>	6
2.6	DICTATION TRANSFER (DSSMOVER PORTABLE)	7
2.7	ACCOMPANYING NOTE	7
2.8	INTERACTION WITH SECRETARIES (DIGTASOFT ONE)	7
3	FREQUENTLY ASKED QUESTIONS (FAQ)	8

DssMover Portable

1 DIGITAL DICTATION WITHOUT PC INSTALLATION

Digital dictation with the Digta 7 Series Dictation machine offers a variety of options for different application scenarios, from the individual user to larger networks with several hundred users.

With the new DssMoverPortable, GBS offers another product, which allows individual users in particular, to get started in digital dictation. The DssMover Portable firstly combines the functions of "configuration of dictation" and also "dictation transfer" without requiring any software installation.

DSSMover Portable is an application for dictation machines of the Digta 7 series that configures the dictation machines (wizard) and transfers dictations via dictation networks (from Win XP SP2). You can benefit from this application when you don't have any central dictation transmission software (for example DSSMover) and/or configuration software (for ex. Digta Configurator) installed.

➔ Note: DSSMover Portable has not been released for use in Terminal Server environments.

2 DESCRIPTION - DssMover Portable

2.1 Availability

The DssMover Portable is included on the DVD delivered with the Digta 7. It is also available as a free download from the website www.grundig-gbs.com.

Via DVD:

- Connect the Digta 7 to the PC
- Insert the DVD and select „DssMover Portable“ from the start animation.
- The DssMover Portable is automatically transferred to the Digta 7 and is ready for use.

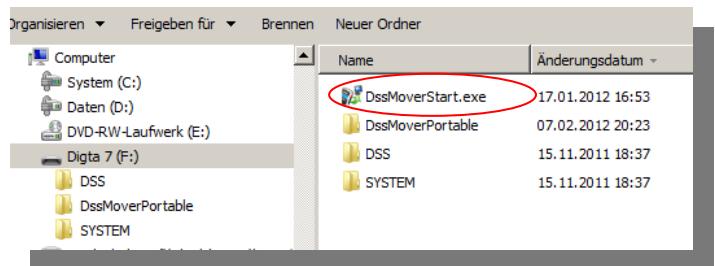
Via Download:

- Connect the Digta 7 to the PC
- Download from the website and unpack the zip file directory
- Start the „DSSMoverPortableWizard.exe“ file.
- The DssMover Portable is automatically transferred to the Digta 7 and is ready for use.

2.2 Start of application

DSSMover Portable is not installed on a PC. Always start DSSMover Portable via the Windows Explorer directly from drive “Digta 7” by double clicking the “DssMoverStart.exe”.

➔ Note: If the dictation machine is connected to the PC, the Digta 7 will show up as a drive “Digta 7” in Windows Explorer. If you select this drive the “DssMoverStart.exe” file will then be displayed.



2.3 Application

DSSMover Portable has two application parts, the **wizard** to set up the dictation machine and the proper **DssMover Portable** for automatic dictation transfer.

Upon first start of the DSSMover Portable the wizard opens to assist you in setting up your dictation machine. These are settings which cannot be configured on the dictation machine but which can be important for individual users as well. The DSSMover Portable starts in the background at the same time, appearing as a symbol in the "info area" of the computer's task bar. If you move the mouse over this symbol „DssMover Portable“ will appear.

Upon each further start of the DSSMover Portable, an icon will appear in the “info area” of the taskbar and the mover will transfer the dictations from the dictation machine.



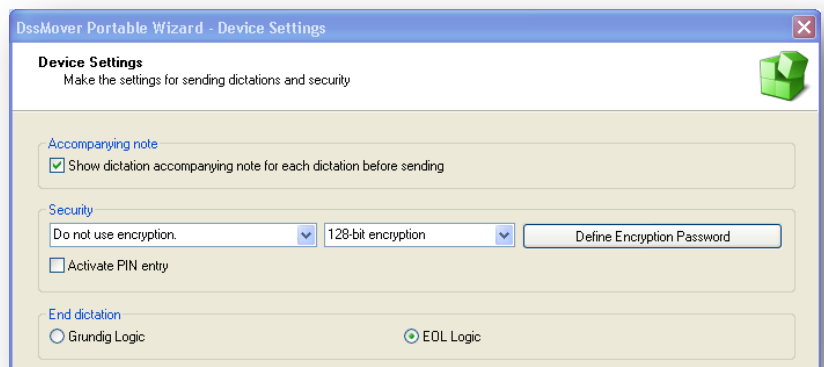
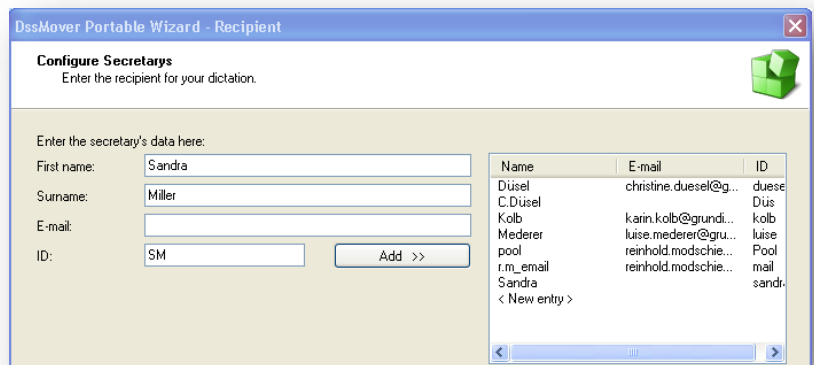
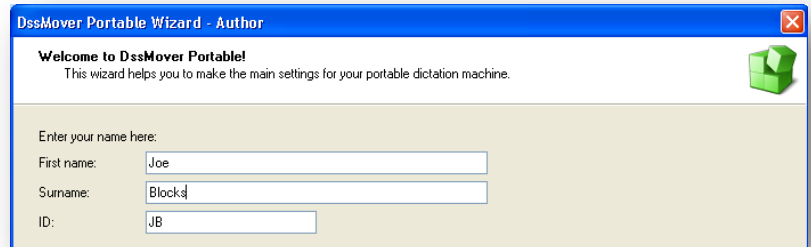
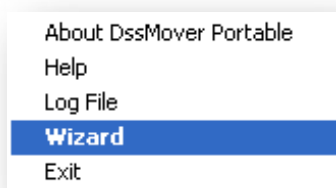
2.4 Device Configuration (Wizard)

Dictation machines of the Digta 7 series provide extensive custom-configuration options. The following settings are possible in the wizard:

- Author's name
- Secretaries
- Predefinition of dispatch routes
- Destination folder for dictation transfer
- E-mail configuration
- Use of accompanying note
- Activation of dictation encryption
- Device PIN activation
- Ending of a dictation in compliance with either GBS or EOL logic

Information on the individual device settings is directly displayed in the wizard.

You can start the wizard again, for example to modify the configuration. To do so the DSSMover Portable must be opened.



Click the DSSMover Portable symbol in the info area with the right mouse button and select the “wizard” command in the displayed context menu with a left mouse click. The wizard opens showing the current settings of the dictation machine.

2.5 Distribution Methods

DSSMover Portable supports the “dispatch routes” file folder and e-mail.

2.5.1 Move dictations to a folder

This option is advisable if you are working locally or on a PC network with the secretary having access to a shared destination folder. The secretary can open dictations directly from the destination folder. With the appropriate playback software (for example DigtaSoft One Player), the secretary can see the current dictations listed in a dictation overview.

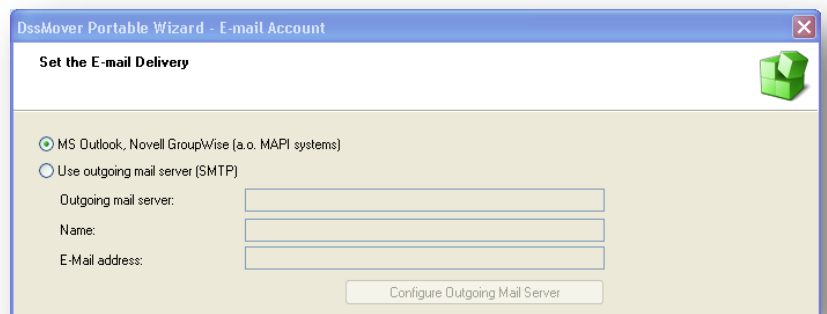
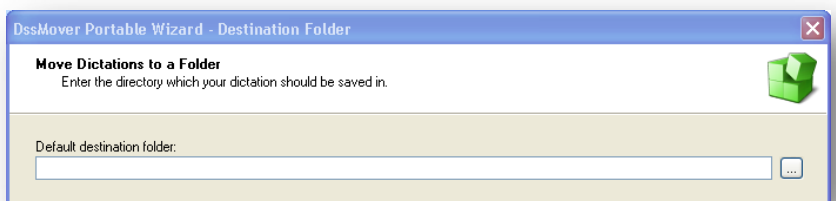
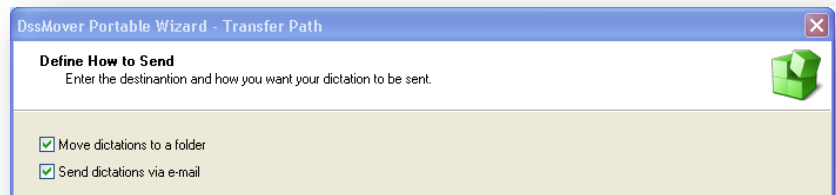
2.5.2 Send dictations by e-mail

This option is advisable if the secretary is at another location without having access to a shared destination folder. Dictations are transferred to the secretary as e-mail attachments. With the appropriate playback software (for example DigtaSoft One player), the inbox of your e-mail programme can automatically be searched for new dictations.

2.5.3 Use of both options from case to case

The wizard allows you also to configure two dispatch routes, for example if one secretary is connected via PC network whilst the other one is available via e-mail connection. In this case it seems advisable to choose the „always display dictation note” option. This allows you to select the dispatch route of each individual dictation during transmission.

If both dispatch routes are selected the DSSMover Portable primarily tries to move the dictations to the selected “standard destination folder”. If there is no access to this folder, the dictation accompanying note will be displayed. In this case you can enter an alternative destination folder or select an e-mail receiver.



2.6 Dictation Transfer (DSSMover Portable)

As soon as the Digta 7 is connected to the PC, the DssMover Portable is started as described. If there are new dictations on the dictation machine, these are automatically transferred depending on the configured transfer route.

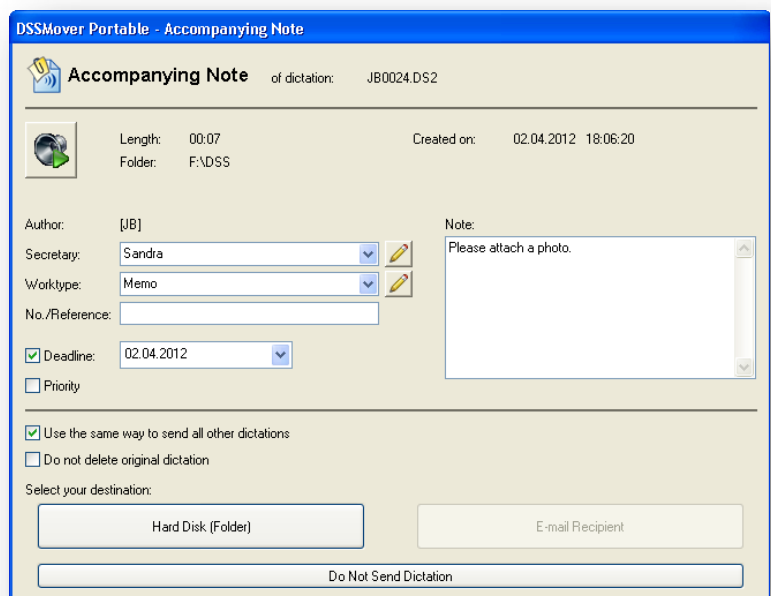
2.7 Accompanying Note

If you selected „show dictation accompanying note“ during configuration using the wizard, each transferred dictation is displayed together with the "accompanying note" window. The „accompanying note“ will also be displayed if no standard destination folder was selected or available.

The accompanying note allows two options:

- Select / change secretary
- Create / assign a work type
- Create / edit "No/Reference" (e.g. file number or patient number)
- Enter a deadline
- Priority setting
- Notification field for the secretary

The accompanying note moreover allows one to both play back the first seconds of the appropriate dictation as well as to select its transfer route.



2.8 Interaction with Secretaries (DigtaSoft One)

The appropriate playback software can be used at the transcription work stations. The combination with the Digta Transcription Starter Kit 568 is ideally suited to this. The software DigtaSoft One, must simply only be installed on the secretary's workstation. This is a very simple "3-click-install" and in a few minutes, is ready for immediate use.

In this case "mail" is automatically selected as a despatch medium. The transcriber will then receive the dictations via e-mail. DigtaSoft one automatically reads this in the e-mail inbox and the dictations can then be transcribed.

3 FREQUENTLY ASKED QUESTIONS (FAQ)

Is it possible that DSSMover Portable can automatically start when the dictation machine is connected to the PC?

Most current operation systems (e.g. Win 7, Win XP SP2) don't allow "auto start" from removable storage media for security reasons.

Can I install DSSMover Portable on my PC as well?

NO...DSSMover Portable only functions if it is started on the dictation machine.

What happens with DSSMover Portable if I format the memory of my dictation machine?

During formatting DSSMover Portable is stored on the Digta 7 and recovered automatically afterwards.

We are part of a dictation network installation and the devices are managed centrally. May I use DSSMover Portable despite of this fact?

You may use DSSMover Portable for dictation transmission but DSSMover PC application however offers more configuration options and a more precise connection to the dictation network.

The wizard should only be used after prior consultation with your dictation network's Administrator. Otherwise a central dictation machine administration could overwrite your settings.

Is it possible to use DSSMover Portable on other dictation machines?

NO...DSSMover Portable is only allowed for use on dictation machines of the Digta 7 series.

Is it also possible to connect the Digta 7 to different PC workstations for transmission purposes?

Yes, that is one advantage of DSSMover Portable. Dictation transmission can be done from different computers as no PC installation is required. If possible, however, a destination folder should be created on the network which can be accessed from all computers.

Copyright © 2012 Grundig Business Systems GmbH
All announcements are subject to alteration without prior notice.
Errors reserved.

Grundig Business Systems GmbH
Weiherstrasse 10
95448 Bayreuth
Germany
www.grundig-gbs.com