

Announcement

Digta»

Digta W/LAN-Adapter

Firmware V2.3

Software DigtaLANConfig V4.1



Release: March 2021

Improvement Digta W/LAN-Adapter from Firmware 2.3

- **Transport Layer Security Protocol TLS 1.3 (and TLS 1.2)**

Most current web browsers and web servers prefer the protocols TLS 1.2 and 1.3 for encryption. The older protocols TLS 1.0 and TLS 1.1 even sometimes lead to a security warning. The web configuration of the Digta W/LAN adapter can now also use the more secure protocols TLS 1.2 and TLS 1.3 for encryption during data transmission.

- **Secure File Transport Protocol SFTP**

For secure file transfer via FTP, SFTP (FTP with encryption) is now also supported.

- **VPN-Client-Konfiguration mittels Konfigurationsdatei**

With firmware 2.3, the Digta W/LAN adapter can send dictations from the portable dictation device to the secretary's office not only in the local network. It is also possible to transfer from the Digta 7 to a dictation network via the Internet and VPN. The Digta W/LAN adapter implements VPN based on the open source OpenVPN 2.4 daemon. The system administrator can create an OVPN configuration file with the necessary certificates and keys and store it on the Digta W/LAN adapter. Instructions for this are available at:

www.grundig-gbs.com/en/support/accessories/digta-wlan-adapter

Improvement Digta W/LAN-Adapter from Firmware 2.2

- During the reinitialization when changing from DHCP to a fixed IP address using a web browser, the web server could sometimes lose the network connection. This problem has been solved.

Improvement Digta W/LAN-Adapter from Firmware 2.1

- Bugfix configuration of fix TCP/IP address for the adapter

Functions Digta W/LAN-Adapter from Firmware V2.0 / V1.8

- **Network connection check configurable**

The cyclic check of the network connection can be configured in the DigtaLan.tpl file (configuration template). The DigtaLan.tpl file can be opened with the Microsoft Wordpad or Notepad++ applications. The parameter check_network defines the cycle time by specifying the seconds.

Example: check_network 20

Without an entry, the Digta W/LAN adapter tests the connection every 60 seconds. If the value is 0, the function is deactivated.

- **Time synchronisation with Digta 7 only when connected to the NTP server**

If the Digta 7 is connected to the Digta W/LAN adapter via the Digta Station, the date and time of the dictation device can be synchronised with a time server. If there was no connection to the Network Time Protocol (NTP) server, the Digta 7 displayed the wrong time. Now the date and time are only set if there is a network connection to the NTP server.

The port number of the NTP server can be specified in the DigtaLan.tpl file (configuration template).

Exemple: ntpclient.@ntpserver[0].hostname 0.openwrt.pool.ntp.org
ntpclient.@ntpserver[0].port 123

- **Text output on the Digta 7 display**

The display of the connected portable dictation device can show the following states of the Digta W/LAN adapter:

- Transmission complete
- Transmission failed
- No dictation found
- Pairing failed.
- Warning
- Unexpected operation
- Error
- Code: <error number>
- Network not available!
- NTP server not available!
- Network connection restored!
- Unknown network status!

Improvement in DigtaLANConfig V4.1

- Adaptation to firmware V2.2 of the Digta W/LAN Adapter
- Configuration of the Digta W/LAN Adapter in sub-networks (e.g. net mask 255.255.128.0)

Improvement in DigtaLANConfig V4.0

- Support of both hardware platforms of the Digta W/LAN Adapter:
 - Omnima MiniEMBPlug (new, since May 2019)
 - Omnima MiniEMBWiFi (former).

Improvements in previous versions

Improvement Digta W/LAN Adapter

- **Function extension of the reset button**

Key pressed for less than 5 s: Reboot of the Digta W/LAN adapter

Key pressed for more than 5 s: Reset to factory settings

- **Secured firmware update for the Digta W/LAN-Adapter**

The cyclic redundancy check (CRC) during reading of an update file into the Digta W/LAN-Adapter ensures that only complete and error-free firmware is accepted and updated.

- **Time synchronization independent of the time server**

In the DigtaLANConfig configuration software, a timeserver can be entered under “Advanced”. A Digta 7 that is connected to a Digta W/LAN-Adapter can adopt its date and time.

Because some timeservers deliver time values that are too imprecise, the synchronization tolerance has been increased to one minute.

- **Configuration of connected dictation devices**

When a dictation device of the Digta 4xx or Digta 7xx series is connected, in addition to dictation transfer into the network, a configuration file called “GHConfig.ini” is transferred to the dictation device and assigned according to device serial number. As soon as the dictation device has been disconnected from the W/LAN-Adapter, the new configuration of “GHConfig.ini” will be loaded.

- **Firmware updates of connected dictation devices**

If a firmware update is available for a dictation device of the Digta 4xx or Digta 7xx series, it can be centrally rolled out and transferred to the dictation devices over the Digta W/LAN-Adapter. As soon as the dictation device has been disconnected from the W/LAN-Adapter, the firmware update will be carried out.

- **Interface for Central Digta Configurator**

The Central Digta Configurator is a database-driven program for administering and configuring dictation devices of the Digta 4xx and the Digta 7xx series. The CDC can be installed so that it reads in configurations for and transfers changes to the dictation devices over the Digta W/LAN-Adapter.

The Central Digta Configurator connection and the Digta W/LAN-Adapter provide administrators of large networks the ideal tools to manage dictation devices even without PC connection, to configure them, and, as required, to distribute firmware updates.

- **Transfer of data lists**

Grundig Business Systems digital dictation devices are equipped with a data list function. It allows patient, client, or customer data, for example, to be transferred to the dictation device and so to be used directly during dictation. This provides users additional information while on the go as well as in the office and allows simpler assignment of dictations to the organizational system.

The data lists can now also be transferred to dictation devices over the Digta W/LAN-Adapter.

- **Transfer of status reports for Digta 7 messaging**

The Digta 7 series is equipped with the Digta messaging system function. It allows automatic exchange of information between the dictation author and secretarial staff. For instance, the author can receive a message on the dictation device indicating that a dictation has been completed or containing a query about unintelligible portions of a dictation being processed.

The transfer of messages is now possible with the Digta W/LAN-Adapter as well.

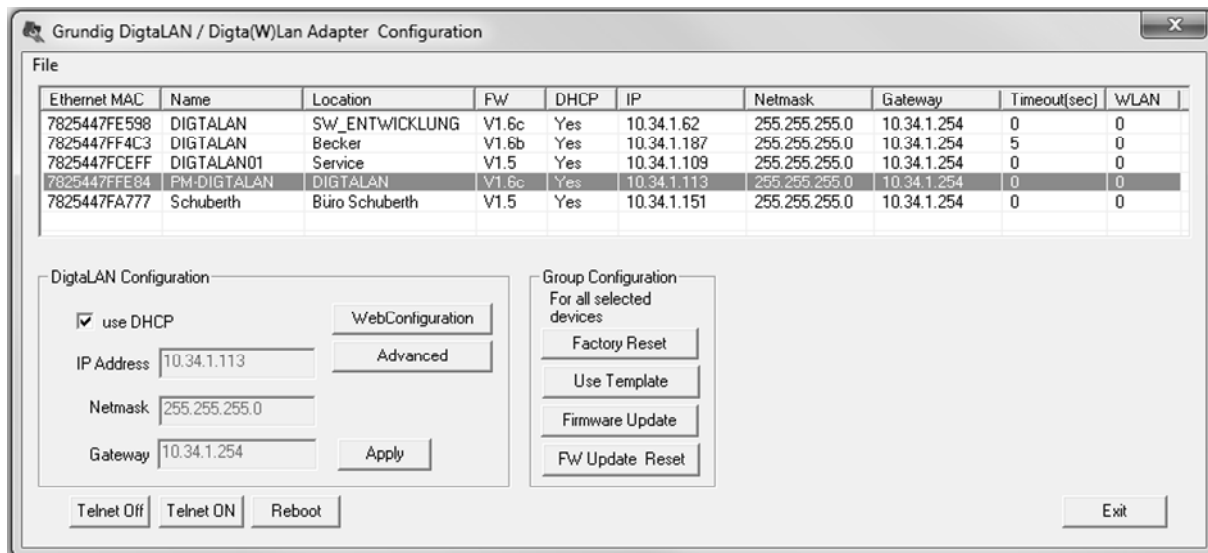
- **More improvements Digta W/LAN Adapter**

- Debugging for SMTP transmission via WEB.DE
- SSL support for SMTP in the web interface can be activated
- Transmission over VPN
- Indication that transmission is complete by a bleep and a message on the Digta 7 display
- Indication of incorrect, incomplete transmission by two beeps and a message on the Digta 7 display.
- After disconnecting a dictation device during data transmission the Digta W/LAN-Adapter re-initialises.
- Synchronisation of the Digta 7 time with the network time (can be switched off)

Improvement in DigtaLANConfig V3.2

- Improvement of the automatic firmware update of the selected Digta W/LAN adapters in batch mode.

Improvement in DigtaLANConfig V 3.1



- **Timeout indicator when no LAN or WLAN connection is available**

In the overview list of W/LAN-Adapters, the “Timeout” column displays how many seconds an adapter has been without network connection. If the connection is uninterrupted, the display will always show “0”.

Previously adapters were only displayed during connection. When the connection was interrupted the adapter now longer showed up and the list changed. Now the length and sequence of the list remains constant. A marked row no longer shifts, resulting in the incorrect configuration of a mistakenly selected adapter.

- **Field strength indicator for WLAN connection**

The overview list also displays the reception field strength of all Digta W/LAN-Adapters. This means that the DigtaLANConfig configuration software can be used to determine whether an adapter has been placed too far away from the WLAN router which may cause errors during dictation transfer.

- **Display of DNS/IP address and server directory**

The W/LAN-Adapter overview list has been expanded to include “FTP server” and “FTP directory” columns, in which the DNS/IP address and the server directory of the target FTP server for transferred dictations are displayed.

- **Column sorting**

The sequence in which the Digta W/LAN-Adapters are displayed in the overview list can be alphabetical or numerical. This function is activated for columns which are subject to sorting. Click the heading of the desired column to change the sorting criteria.

- **Variable window size**

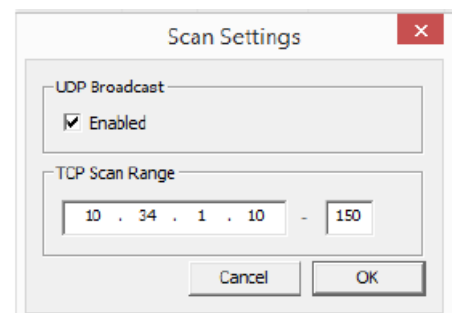
The user can now change the height and width of the overview list window and thus adjust window size to the number of Digta W/LAN-Adapters listed.

- **Marking rows with mouse and cursor buttons**

To select a Digta W/LAN-Adapter in the overview list, click on the corresponding row. The row marker can now be moved with the cursor buttons to select the corresponding adapter.

- **Configuration of the Digta W/LAN-Adapter in other networks**

In the menu item “File/Settings”, the network number range for locating the Digta W/LAN-Adapter can be entered. VLAN networks are also supported. The Digta W/LAN-Adapters that are in the configured network number range can be searched for and displayed in the list by using the “Scan” menu item or pressing F5.

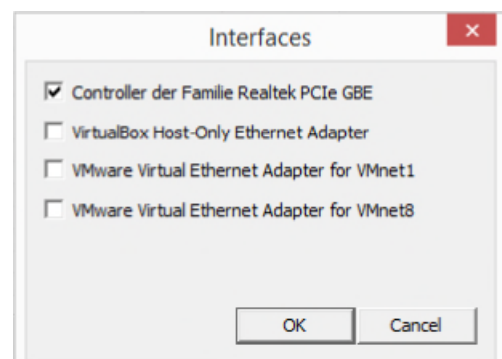


- **Individual name instead of IP address**

Under “Advanced”, a name (alias) can be entered in place of the IP address of the TCP server. The Digta W/LAN-Adapter resolves the IP address through the server name.

- **Selection of network adapters used**

Locally available network adapters are displayed under the “File/Interfaces” menu item. The network adapters that are actually to be used for UDP broadcast can be selected. This avoids multiple displays of individual network adapters that are found through various interfaces.



Improvement in DigtaLANConfig V 2.4

- Transfer of a Digta W/LAN-Adapter configuration to another adapter. This eliminates the necessity of configuring each individual adapter.
- Adapter location entry allows better management of Digta W/LAN-Adapters.
- Designation of an alternative time server.
- Activation and configuration of separate FTP access for the new bidirectional communication functions (FW update, configuration, data lists, messaging).

Copyright © 2021 Grundig Business Systems GmbH
Information is subject to change without prior notice.
Errors excepted.

Grundig Business Systems GmbH
Weiherstraße 10
95448 Bayreuth
Germany

www.grundig-gbs.com